



Just minutes from great shopping, dining and entertainment, is a place to unwind, a tranquil place, a place to look forward to. This place...well, it's a great place to call home! Welcome to The Landing, where you'll discover comfortable surroundings with the features and amenities you deserve!

Just a few minutes from major thoroughfares, The Landing is close to all that Victoria has to offer!

### COMMUNITY AMENITIES

- 1 and 2 Story Floorplans
- 2 Acre Lake On-site
- Sparkling Swimming and Wading Pool
- Hot Tub
- Walking / Jogging Trail
- Picnic and Grilling Areas
- Convenient to Shopping
- Convenient to Dining
- Online Maintenance Requests
- High Speed Internet Access Available
- Professional On-Site Management
- 24-Hour Emergency Maintenance
- Guest Parking
- Public Parks Nearby
- Convenient To Downtown Victoria
- Pet-Friendly Community\*\*

\*\*Restrictions may apply.

### Floor Plans

- 1 Bedroom / 1 Bath - 884 Sq. Ft.\*
- 1 Bedroom / 1 Bath - 880 Sq. Ft.\*
- 2 Bedroom / 1.5 Bath - 1,058 Sq. Ft.\*

### INTERIORS

- Washer / Dryer in Every Unit
- Enclosed Garage with Automatic Door Opener
- Wood-Burning Fireplace
- Ceiling Fans
- Includes Water, Waste and Garbage
- Frost-free Refrigerator with Ice Maker
- Electric Range / Oven
- Dishwasher / Disposal
- Large Closets

\*Available in select homes



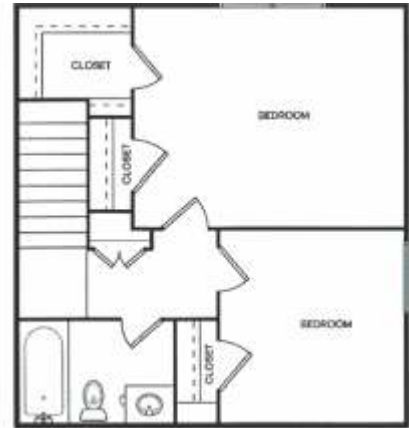
## FLOORPLAN TYPES



**A** 1 Bedroom / 1 Bath / Study - 884Sq. Ft.\*

**B**

2nd Floor



1st Floor



2 Bedroom / 1.5 Bath  
1,058 Sq. Ft.\*



1st Floor



2nd Floor

**C** 2 Bedroom / 1.5 Bath 1,058 Sq. Ft.\*

\*All dimensions and Measurements are approximate.

**D**

1 Bedroom / 1 Bath 880 Sq. Ft.\*

